



 **LITHIUM  
IONIC**

# Brazil's Next Major Lithium Producer

Near-term production of high-quality, low-cost, lithium concentrate in Minas Gerais' Lithium Valley, strategically positioned to support the global EV and battery supply chains.

TSX.V: **LTH** | OTCQX: **LTHCF** | FSE: **H3N**

Corporate Presentation - May 2025





# CAUTIONARY NOTES

The NI 43-101 technical report associated with the Bandeira Lithium Project Feasibility Study (FS) will be available on SEDAR+ at [www.sedarplus.ca](http://www.sedarplus.ca) under the Company's issuer profile, as well as the Company's website at [www.lithiumionic.com](http://www.lithiumionic.com) within 45 calendar days from the May 29, 2024, press release.

## **Feasibility Study Consultants**

The FS is prepared by independent representatives of AtkinsRéalis, GE21, Planminas and L&M each of whom are Qualified Person as defined by NI 43-101 Standards of Disclosure for Mineral Projects. Each of the QPs are independent of Lithium Ionic and have reviewed and confirmed that the content of the FS news release fairly and accurately reflects, in the form and context in which it appears, the information contained in the respective sections of the Bandeira FS for which they are responsible.

## **Qualified Persons**

Mineral Resource Estimate: Carlos José Evangelista, Geologist from GE21; Underground mine studies: Engineer, Rubens Mendonça from Planminas; The mineral processing studies were consolidated and defined by Tony Lipiec, Process Engineer and Vice President Global, Minerals & Metals Processing at AtkinsRéalis; Environmental studies: Branca Horta from GE21; Tailings Disposal systems: Porfírio Cabaleiro from GE21; The economic and financial model was certified and validated by João Augusto Hilario de Souza from L&M Advisory, as the qualified professional.

This presentation contains, or incorporates by reference, "forward looking information" within the meaning of applicable Canadian securities legislation. Forward looking information may include, but is not limited to, statements with respect to the future performance of Lithium Ionic Corp. ("Lithium Ionic" or the "Company"), Lithium Ionic mineral properties, the future price of lithium and other metals, the mineralization of the Company's properties, results of exploration activities and studies, the realization of mineral resource and mineral reserve estimates, exploration activities, costs and timing of the development of new deposits, the results of future exploration and drilling, the results of environmental studies, management's skill and knowledge with respect to the exploration and development of mining properties in Brazil, the Company's ability to raise adequate financing; the Company's ability to obtain the requisite permits and approvals, the economic viability of its mining projects, government regulation of mining operations and exploration operations, timing and receipt of approvals and licenses under mineral legislation, the Company's local partners, and environmental risks and title disputes. In certain cases, forward looking statements can be identified by the use of words such as "plans", "expects", "is expected", "budget", "scheduled", "estimates", "forecasts", "intends", "anticipates" or "believes", or variations (including negative variations) of such words and phrases, or state that certain actions, events or results "may", "could", "would", "might" or "will" be taken, occur or be achieved.

Forward-looking statements involve known and unknown risks, uncertainties and other factors which may cause the actual results, performance or achievements of Lithium Ionic to be materially different from any future results, performance or achievements expressed or implied by the forward-looking statements. Such factors include, among others, risks associated with the Company's dependence on the Bandeira property; general business, economic, competitive, political and social uncertainties; the actual results of current exploration activities; risks associated with dependence on key members of management; currency fluctuations (particularly in respect of the Canadian dollar, the United States dollar, the Brazilian reais

and the rate at which each may be exchanged for the others); uncertainty in the estimation of mineral resources and mineral reserves, exploration and development risks; infrastructure risks; inflation risks; defects and adverse claims in the title to the projects; accidents, political instability, insurrection or war; labour and employment risks; changes in government regulations and policies, including laws governing development, production, taxes, royalty payments, labour standards and occupational health, safety, toxic substances, resource exploitation and other matters; delays in obtaining governmental approvals or financing or in the completion of development or construction activities; insufficient insurance coverage; the risk that dividends may never be declared; and liquidity and financing risks related to the global economic crisis. Although Lithium Ionic has attempted to identify important factors that could cause actual actions, events or results to differ materially from those described in forward looking statements, there may be other factors that cause actions, events or results to differ from those anticipated, estimated or intended. Forward looking statements contained herein are made as of the date of this presentation. There can be no assurance that forward looking statements will prove to be accurate, as actual results and future events could differ materially from those anticipated in such statements. Accordingly, readers should not place undue reliance on forward looking statements due to the inherent uncertainty therein.

Information in this presentation relating to other companies are from their sources believed to be reliable but that have not been independently verified by the Company.

Unless otherwise indicated, the scientific and technical information in this presentation has been reviewed and approved by Carlos Costa, Vice President of Exploration for Lithium Ionic, who is a Qualified Person as defined by National Instrument 43-101 of the Canadian Securities Administrators ("NI 43-101").

**Outro Lado Mineral Resource Estimate** was prepared by Maxime Dupere, P.Geo., M.Sc., and Faisal Sayeed, P.Geo of SGS, each a Qualified Person as defined by NI 43-101, with an effective date of June 24, 2023. The supporting Technical Report can be found on SEDAR+ under the Company's issuer profile and on the Company's website ([www.lithiumionic.com](http://www.lithiumionic.com)).

DISCLOSURE FOR U.S. INVESTORS: The securities described herein have not been and will not be registered under the U.S. Securities Act 1933, as amended (the "U.S. Securities Act") or any U.S. state securities laws. Accordingly, the securities described herein will not be offered or sold in the United States except in reliance on exemptions from registration provided under the U.S. Securities Act and the rules thereunder. Securities may not be offered or sold in the United States absent registration with the Securities and Exchange Commission or an exemption from such registration. Under no circumstances is this presentation or the information contained herein to be construed as a prospectus, offering memorandum or advertisement, and neither any part of this written or oral presentation nor any information or statement contained herein or therein shall form the basis of or be relied upon in connection with any contract or commitment whatsoever. This presentation should not be construed as legal, financial or tax advice to any investor, as each investor's circumstances are different. Readers should consult with their own professional advisors regarding their particular circumstances. There are certain risks inherent in an investment in the securities of the Company that prospective investors should carefully consider before investing in the securities of the Company.

# LITHIUM IONIC

Near-term production of high-quality lithium concentrate to support the global EV and battery supply chains.



## WHY LITHIUM IONIC?

**MINING-FRIENDLY JURISDICTION**

**+300** Mines in Minas Gerais

**3rd** Minas Gerais is the 3<sup>rd</sup> largest economy in Brazil

**INFRASTRUCTURE ADVANTAGE**

**Hydroelectric** Grid Power

**Nearby Ports** <300km away

**Paved Roads** High-quality transport infrastructure

**Water** Local Sustainable Access

**ESTABLISHED LITHIUM-PRODUCING DISTRICT**

Successful Regional Proof-of-Concept

**CBL** Cachoeira Lithium Mine <500m

**LITHIUM IONIC** Bandeira Lithium Project

**SIGMA LITHIUM** Grota do Cirilo Mine <4km

**HIGHLY SCALABLE**

**68.6Mt** Global Mineral Resources

**3** NI 43-101 Lithium Deposits in the "Lithium Valley"

**17,000 ha** Properties remain largely unexplored

**FLAGSHIP PROJECTS**

**BANDEIRA**

FEASIBILITY STUDY, MAY 2024: LOW CAPITAL & HIGH ROR

**US\$1.3B** NPV

**40%** IRR

**14 years** Mine Life

**\$266M** CAPEX

**178ktpa** LOM Production

**SALINAS**

MINERAL RESOURCE, JAN. 2024:

**6.5Mt @ 1.11% Li<sub>2</sub>O** M&I

**12.9Mt @ 0.96% Li<sub>2</sub>O** INF.

Within 100m from the Colina Lithium Deposit, recently acquired by Pilbara Minerals



# WHY BRAZIL?

## A REGION THAT HAS RECENTLY EMERGED AS A GLOBALLY SIGNIFICANT HARD-ROCK LITHIUM-PRODUCING DISTRICT

- **Minas Gerais (“General Mining”):** A traditional mining jurisdiction with a highly efficient and expeditious permitting process

## SIGNIFICANT EFFORT BY GOVERNMENT TO REDUCE BUREAUCRACY IN THE MINING SECTOR

- **Unrestricted Trade:** In July 2022, Brazil issued a presidential decree allowing unrestricted trade of any products containing lithium
- **Launch of “Lithium Valley Brazil” in May 2023:** Initiative launched by the state government of Minas Gerais and other municipal government agencies aimed at streamlining and facilitating lithium development and production to position it as a key global player in the lithium supply chain.



[www.lithiumvalleybrazil.com.br](http://www.lithiumvalleybrazil.com.br)



# PERMITTING TIMELINES

BRAZIL'S LITHIUM VALLEY VS. OTHER MAJOR LITHIUM HUBS



**LITHIUM VALLEY  
BRAZIL**

6 MONTHS - 1 YEAR



## RECENT PERMITTING MILESTONES

- **July 2023:** Lithium Ionic projects granted "Priority Status" by Minas Gerais State
- ▶
- **November 2023:** Application submitted for LAC environmental license
- ▶
- **February 2025:** SEMAD issues report recommending LAC approval



**WESTERN  
AUSTRALIA**

2 - 2.5 YEARS



**CANADA**

7 - 9 YEARS



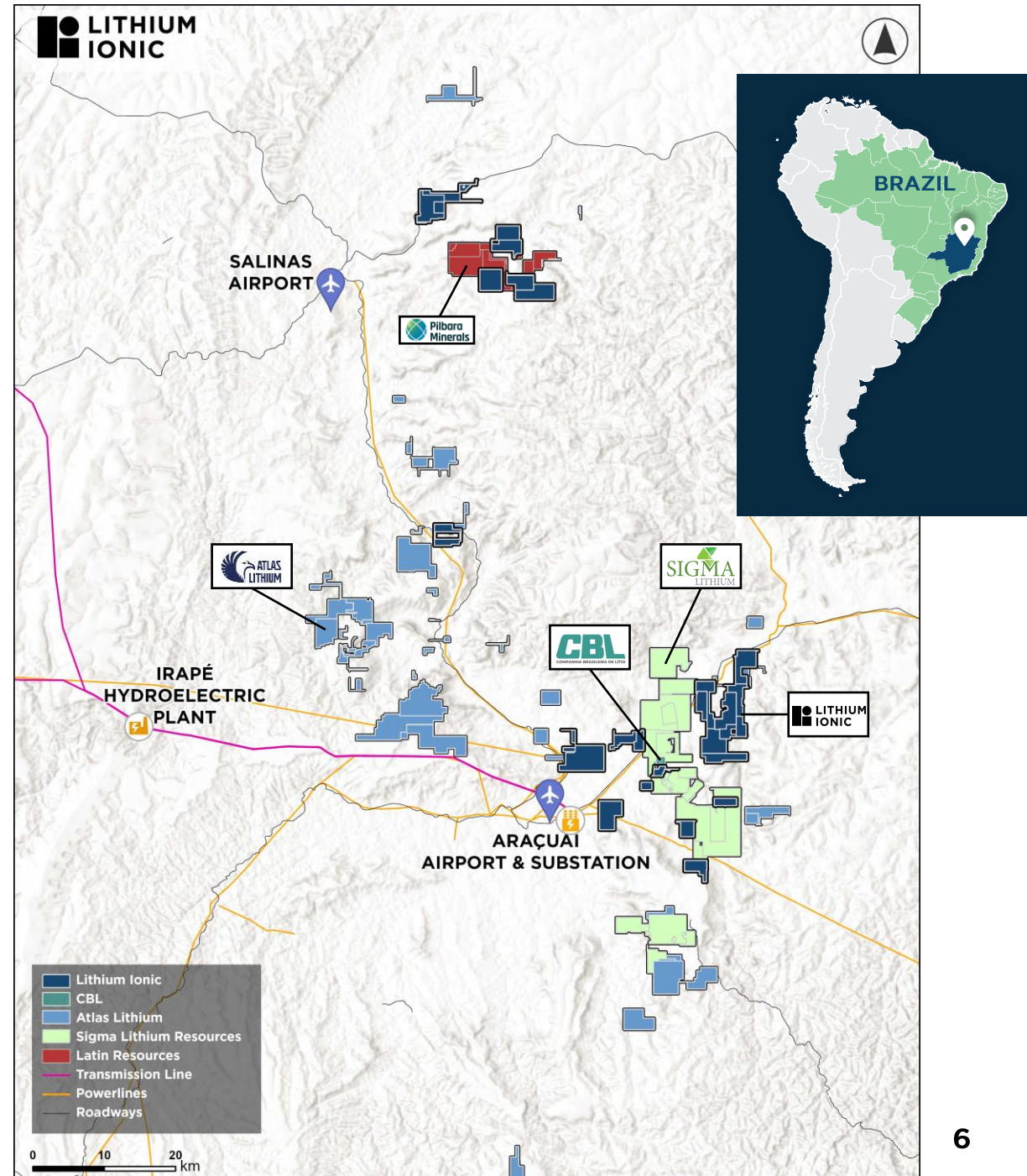
# ~17,000 HECTARES IN THE LITHIUM VALLEY

Favourable mining and transport infrastructure, hydroelectric power, water and easy access to foreign markets via nearby port access.

## HYDROELECTRIC POWER & NEARBY POWERLINES



## PAVED DRIVE TO PORT VITÓRIA

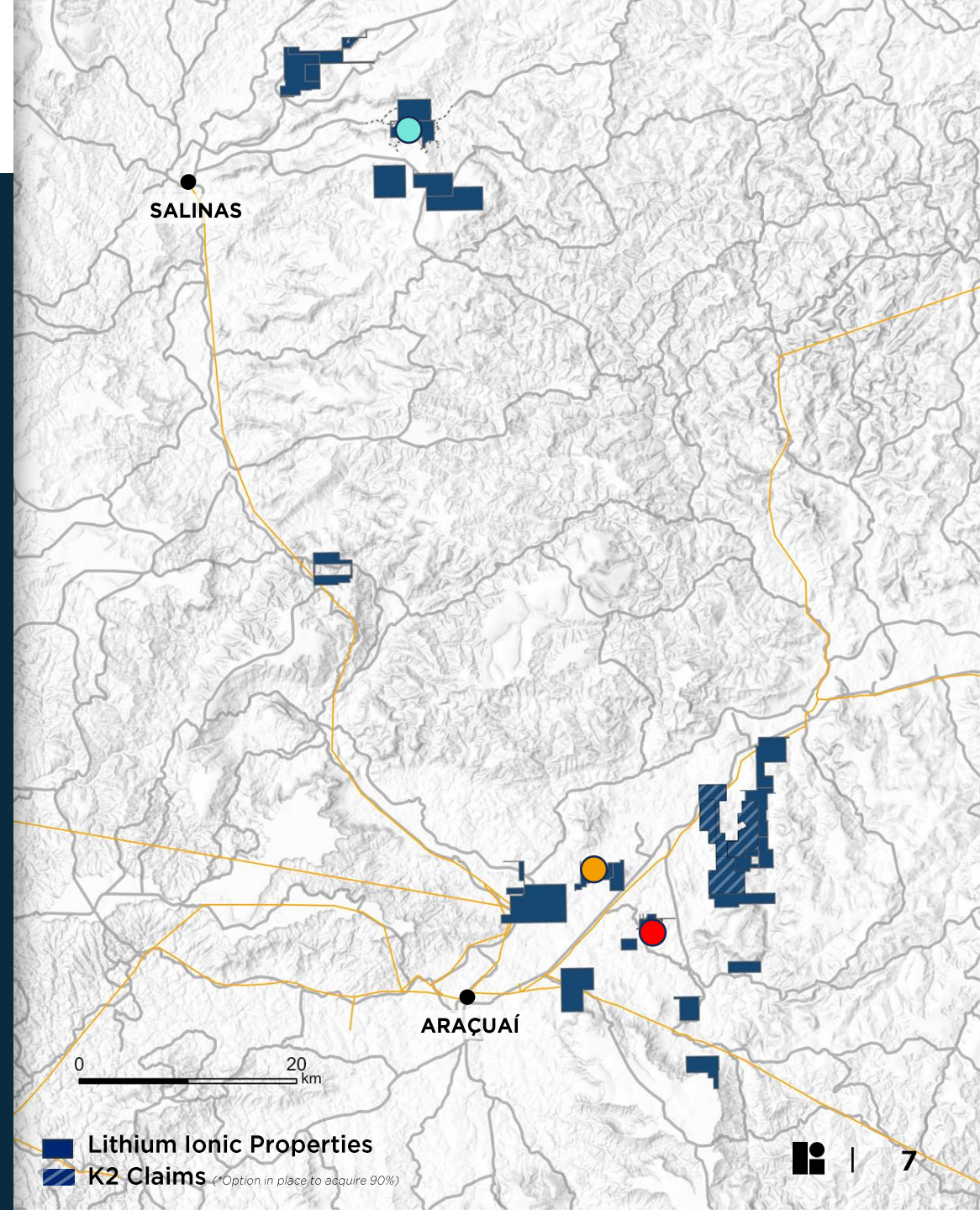
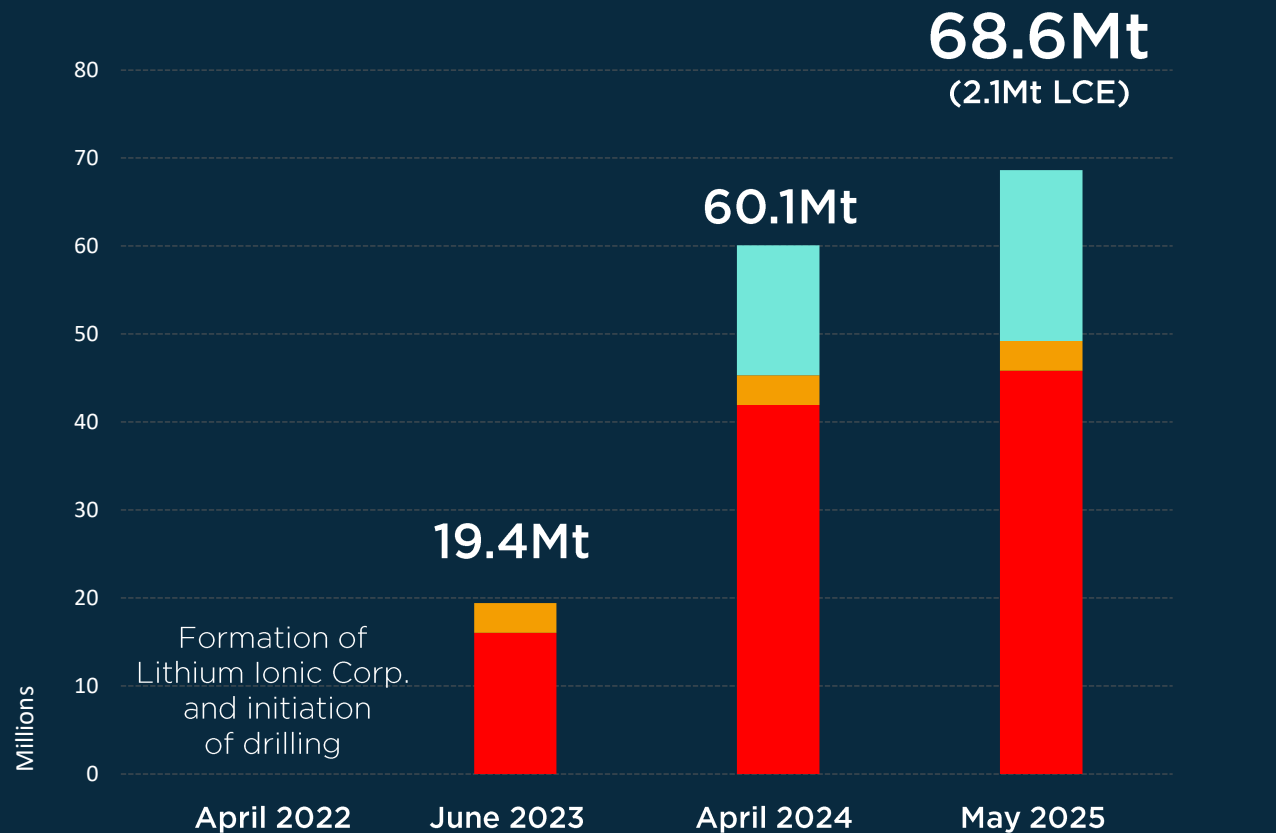




# RAPID MINERAL GROWTH

Excellent understanding of the regional geological setting

= HIGH DISCOVERY RATE



■ Bandeira ■ Outro Lado ■ Salinas

\*See Appendix for details related to the MRE. Bandeira MRE: see press release dated April 12, 2024; Salinas MRE: See press release dated April 4, 2024; Outro Lado MRE: See press release dated June 27, 2023



# MINERAL RESOURCES

**68.6Mt**

2.1Mt LCE

**GLOBAL  
MINERAL  
RESOURCES**

**BANDEIRA**

M&I:  
27.27Mt grading 1.34% Li<sub>2</sub>O  
Inferred:  
18.55Mt grading 1.34% Li<sub>2</sub>O

*Underground; 0.5% Li<sub>2</sub>O cut-off*

**BAIXA GRANDE**

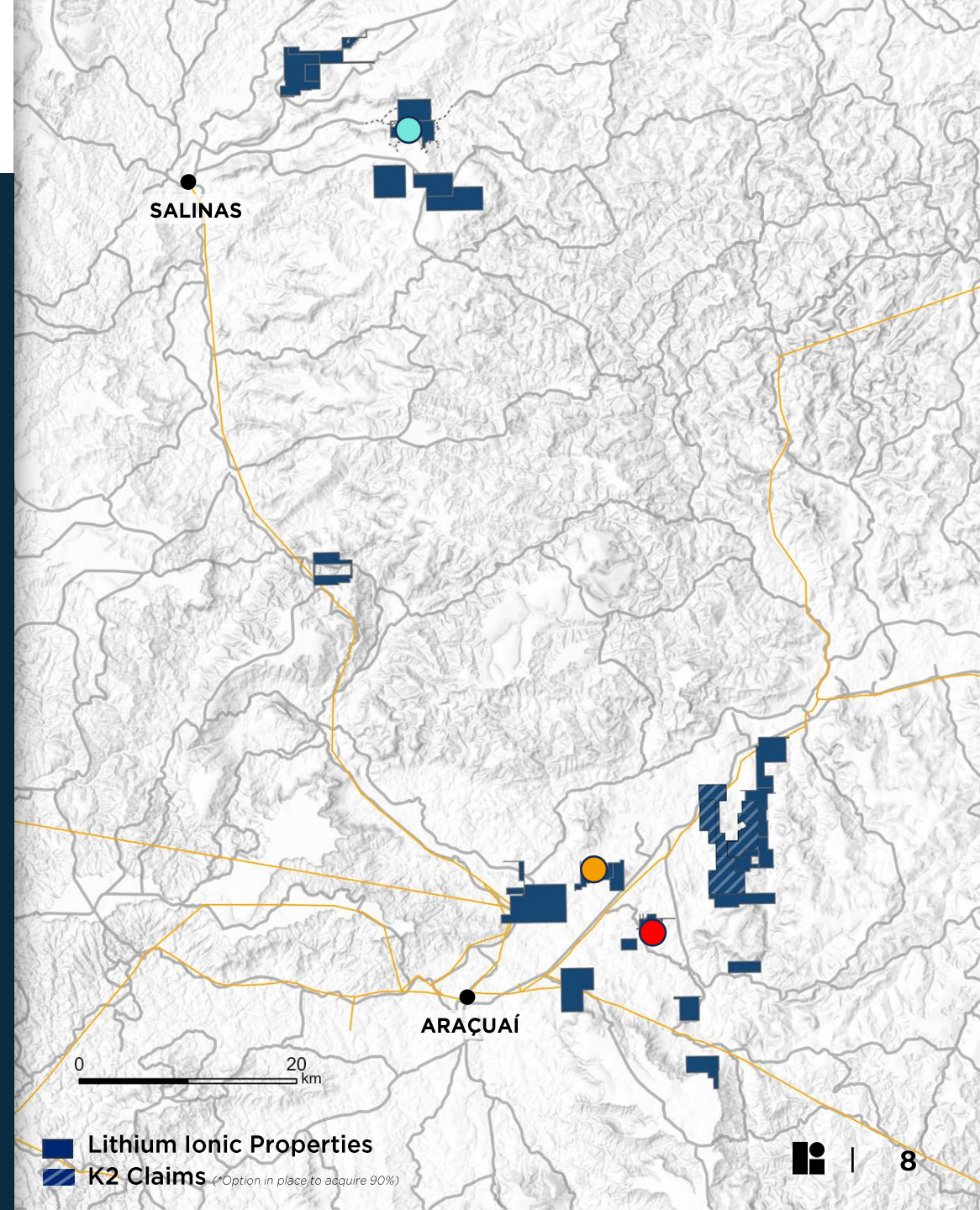
M&I:  
6.52Mt grading 1.11% Li<sub>2</sub>O  
Inferred:  
12.90Mt grading 0.96% Li<sub>2</sub>O

*OP + UG; 0.5% Li<sub>2</sub>O cut-off*

**OUTRO LADO**

M&I:  
2.97Mt grading 1.46% Li<sub>2</sub>O  
Inferred:  
0.42Mt grading 1.48% Li<sub>2</sub>O

*Underground; 0.8% Li<sub>2</sub>O cut-off*



**Lithium Ionic Properties**  
**K2 Claims** (\*Option in place to acquire 90%)

\*See Appendix for details related to the MRE. Bandeira MRE: see press release dated May 6, 2025; Salinas MRE: See press release dated April 4, 2024; Outro Lado MRE: See press release dated June 27, 2023



# REGIONAL PROOF-OF-CONCEPT

PRODUCER



## CACHOEIRA LITHIUM MINE

- Private Brazilian company
- Producing lithium since 1991
- Underground mining; DMS processing

PRODUCER



## GROTA DO CIRILO PROJECT

- Among the world's largest lithium mines
- 1st production achieved in April 2023
- Open pit mining; DMS processing

EMERGING PRODUCER



## BANDEIRA PROJECT

- Feasibility Study completed in May 2024
- Construction permits expected Q2 2025
- Underground mining; DMS processing

## ITINGA PROPERTIES

- Lithium Ionic
- K2 Claims (Option to acquire 90%)
- Mineralized Pegmatites
- Soil Anomalies
- Powerlines
- Access Road

0 5 km



**CBL**  
COMPANHIA BRASILEIRA DE LÍTIO

CBL Mine  
(in production since 1991)

800m

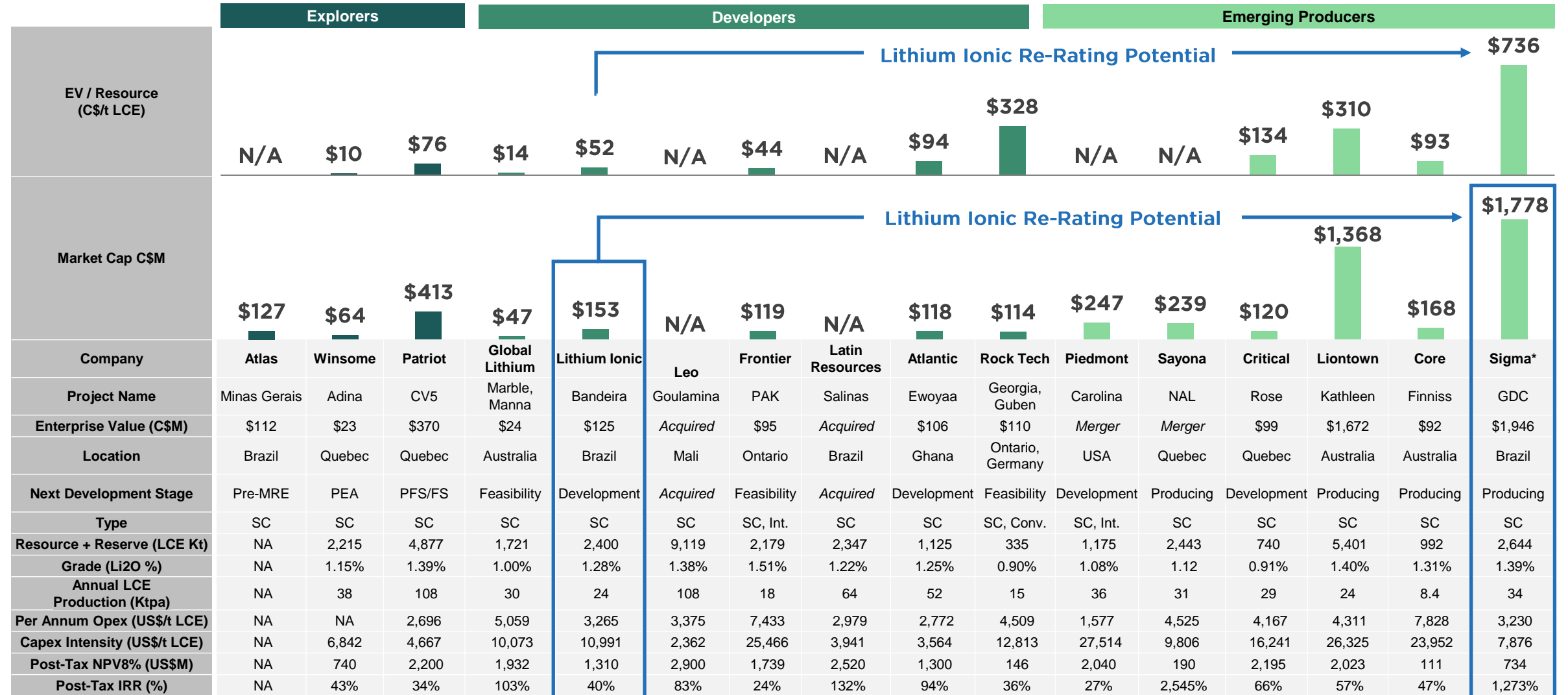
**LITHIUM IONIC**

BANDEIRA  
Drilling Site



# HARD ROCK LITHIUM PEER BENCHMARKING

LTH STRONG RE-RATING POTENTIAL WITH SIGMA AS PRIMARY COMPARABLE LOCATED WITHIN SAME LITHIUM BASIN IN BRAZIL



Source: Company disclosures, S&P Capital IQ, market data as of February 19, 2025

Notes: Project economics for non-producing assets are based on most recently published technical studies. Producing assets use modelled 2024 figures to calculate Per Annum Opex, LCE production, and Capex Intensity. Capex intensity based on development/expansion figures as per latest S&P report. For producing mines, post-tax NPV8% based on S&P CapIQ. Global Lithium based on Manna Scoping Study, Piedmont based on Carolina Lithium FS, Sayona based on Authier and NAL FS, Sigma includes technical report on resource expansion dated Jan 19, 2023. Opex includes mining, processing & G&A and excludes royalties & transport costs. LTH Resource current as of May 2024 feasibility study. Sigma Lithium figures represent all 3 phases of their project. Sigma is currently producing 374tpa of LCE with phase 1 operating. Phase 2 is under construction with Phase 3 still pending.

# SALINAS PROJECT

JANUARY 2025

## MINERAL RESOURCE ESTIMATE

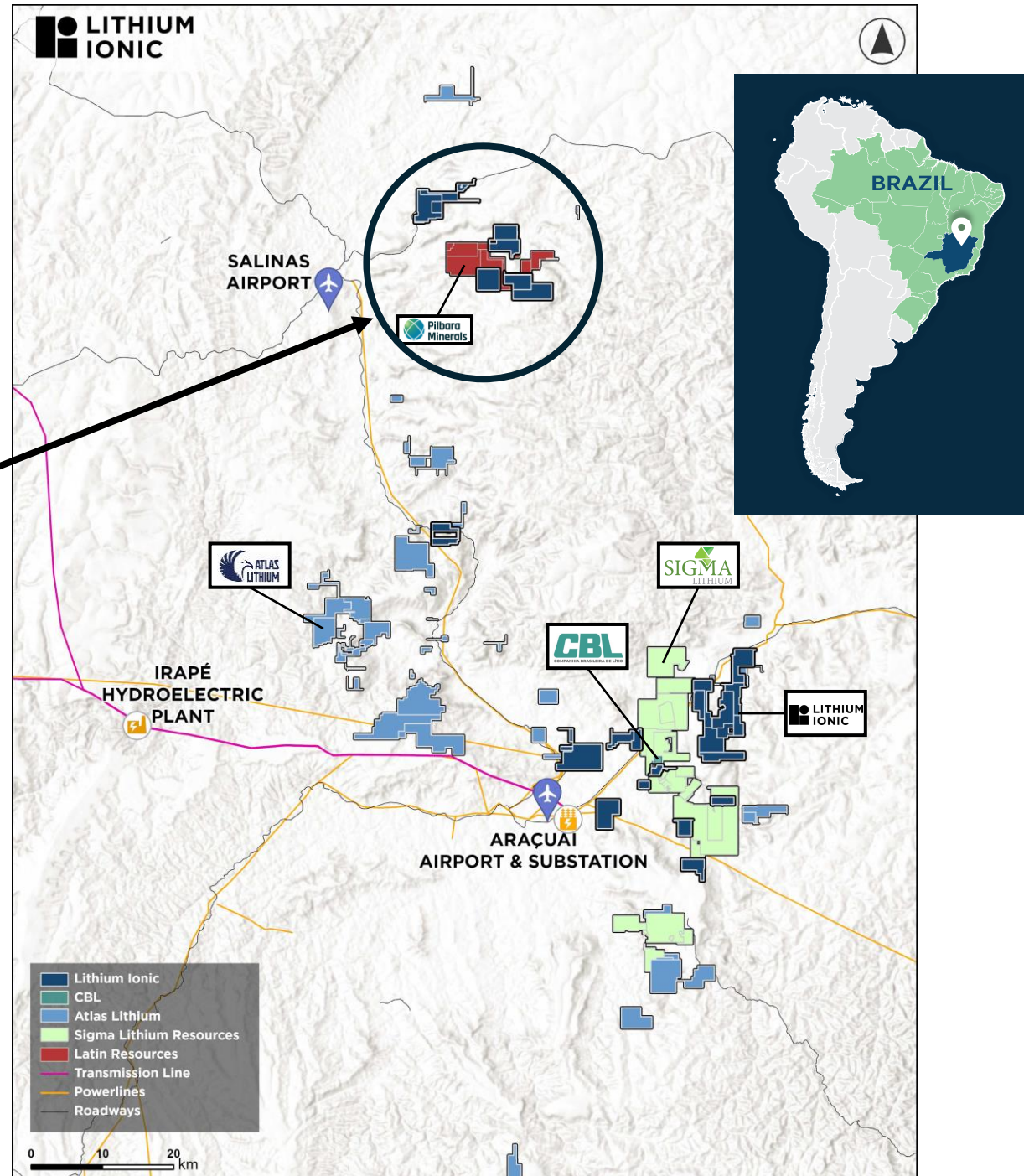
*M&I:*

**6.52Mt @ 1.11% Li<sub>2</sub>O (180kt LCE)**

*Inferred:*

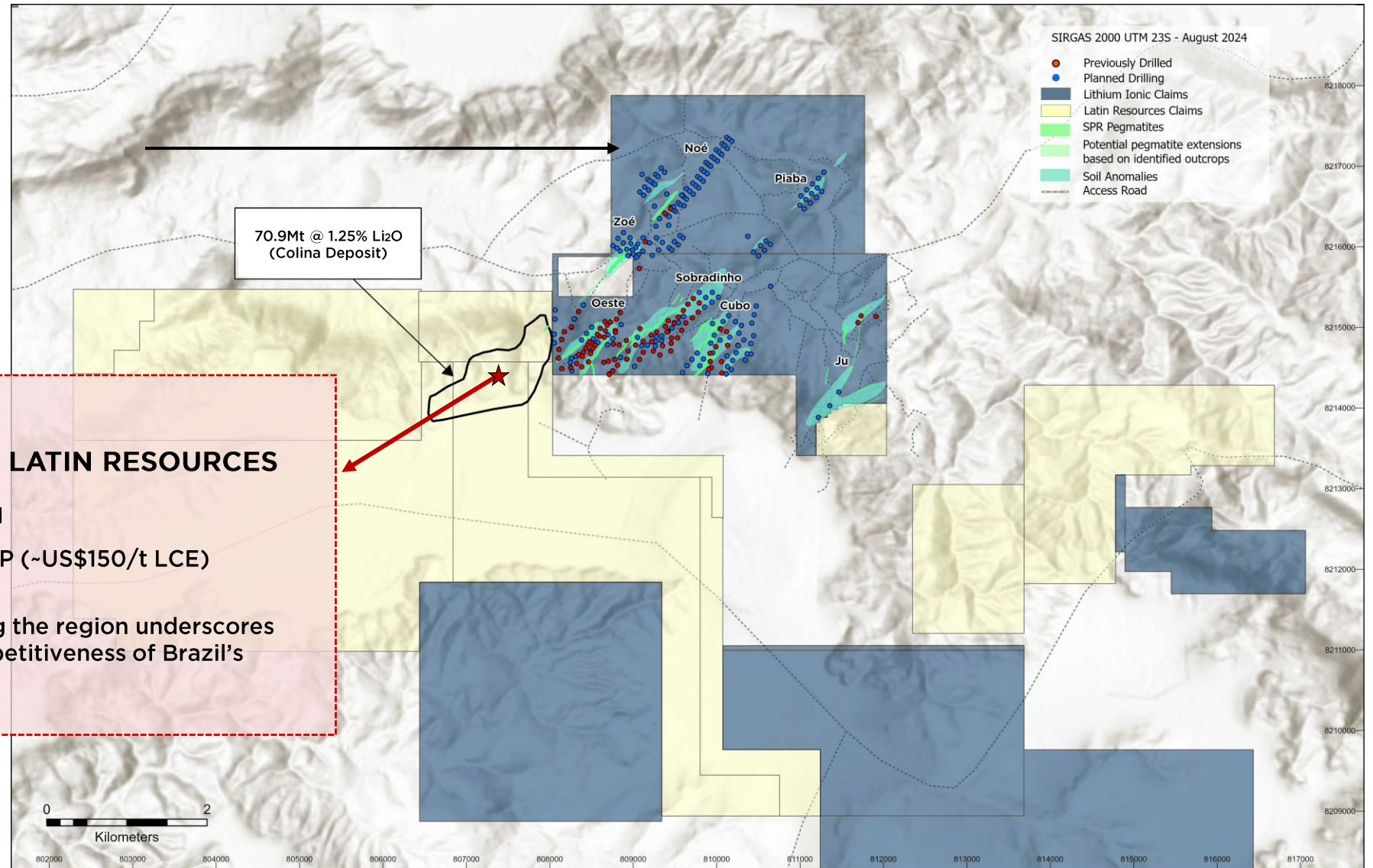
**12.90Mt @ 0.96% Li<sub>2</sub>O (306kt LCE)**

*OP + UG; 0.5% Li<sub>2</sub>O cut-off*





# SALINAS PROJECT



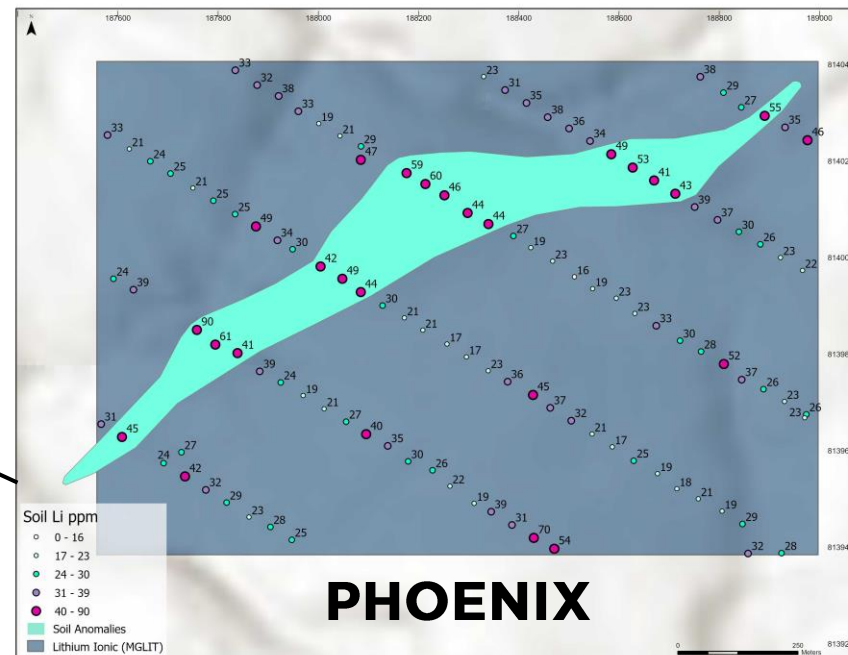
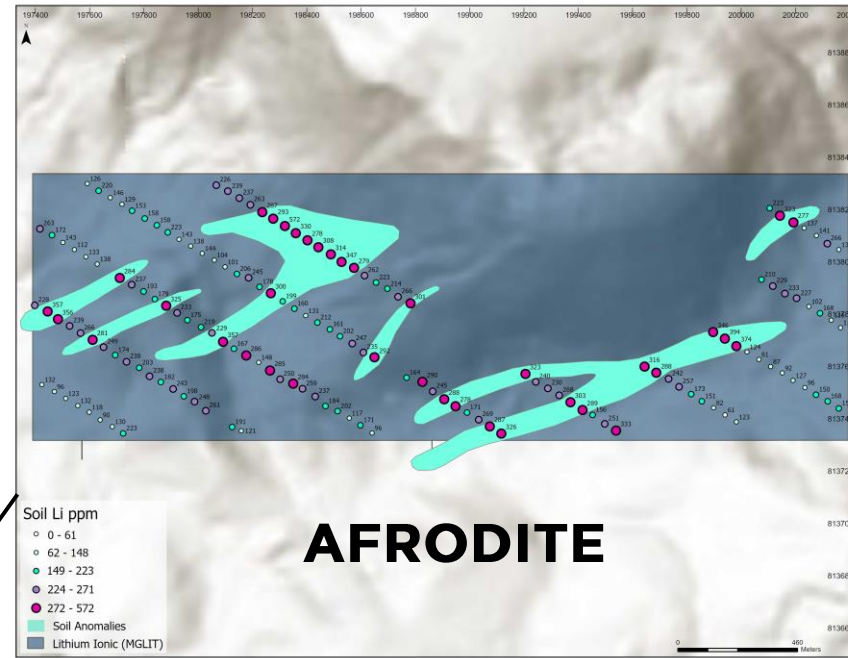
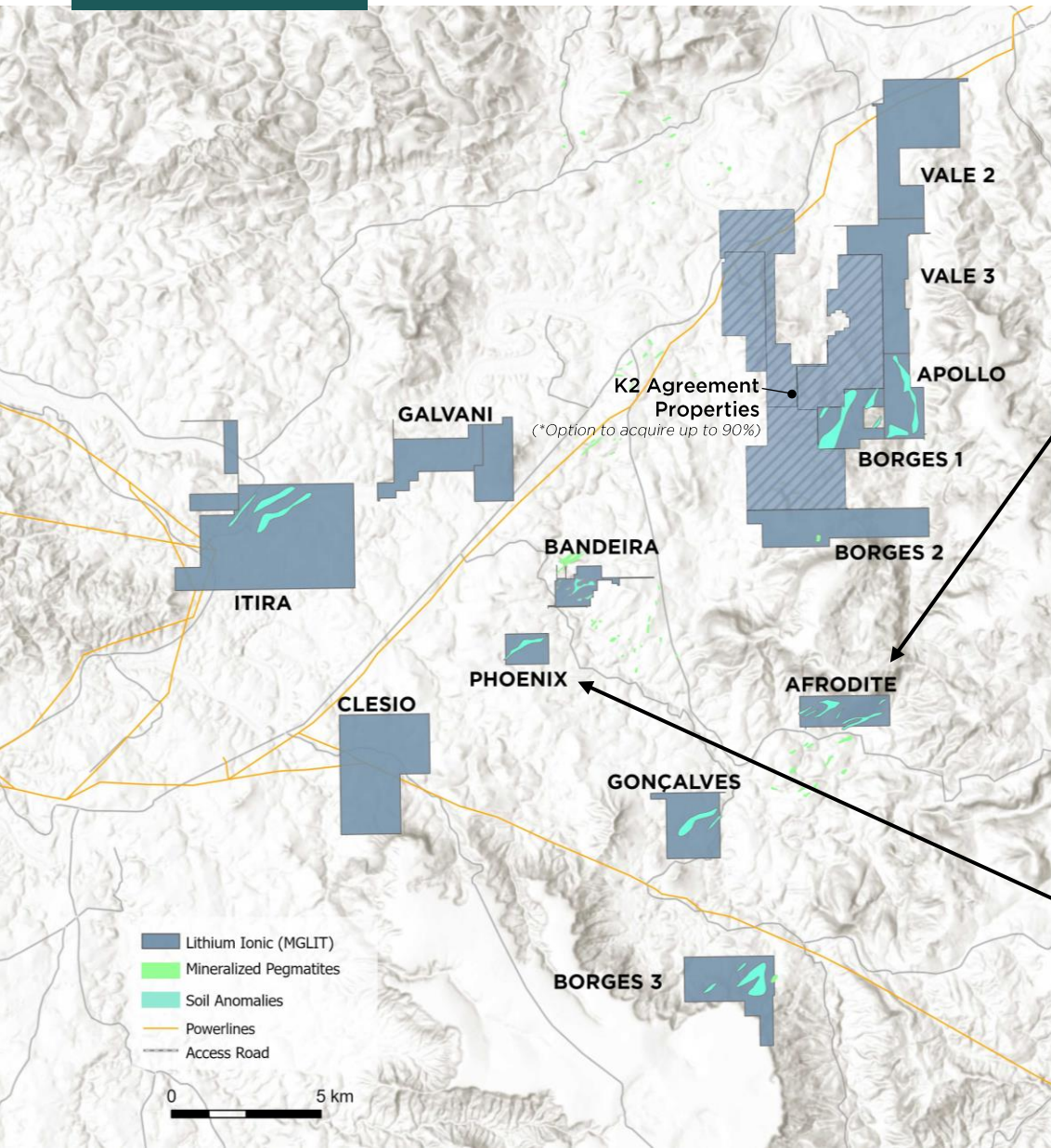
FEBRUARY 2025:

## PILBARA MINERALS ACQUIRED LATIN RESOURCES

- All-share transaction worth US\$370M
- 32% premium to Latin's 30-day VWAP (~US\$150/t LCE) (67% to last closing price)
- Established lithium producer entering the region underscores the quality, quantity and global competitiveness of Brazil's lithium deposits in this region.



# REGIONAL POTENTIAL



Significant regional soil anomalies have yet to be drilled near the **Bandeira Project**





# BANDEIRA FEASIBILITY STUDY

---



# BANDEIRA FEASIBILITY STUDY: KEY RESULTS

Small footprint underground mine producing high-quality, low-cost lithium concentrate

**178ktpa**

AVG. ANNUAL PRODUCTION

**24.2**

ktpa LCE

**14-YEAR**

MINE LIFE

**17.2M**

ORE MINED

**1.23Mtpa**

ANNUAL THROUGHPUT

**\$917/t (SC5.5)**

NEAR-TERM PRICE ASSUMPTION

**\$1.31B**

POST-TAX NPV

**40%**

POST-TAX IRR

**\$444/t**

OPEX (PRODUCED)

**\$266M**

CAPEX

Incl. 15% Project Contingency

**\$286M**

AVG LOM POST-TAX FREE CASH FLOW  
(post-payback, years 4-14)

**41 Months**

PAYBACK



# BANDEIRA PRODUCTION

AVERAGE PLANT THROUGHPUT

**1.23 Mtpa**

RECOVERY

**68.9%**

ORE MINED

**17.2Mt**

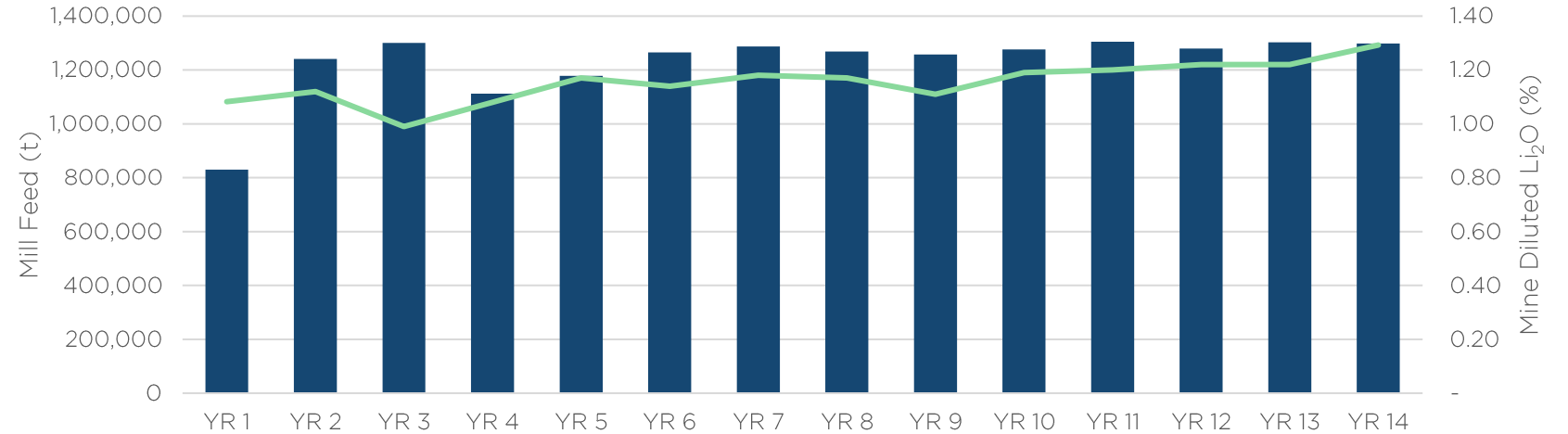
LOM AVERAGE ANNUAL PRODUCTION

Spodumene Concentrate  
Grading 5.5% Li<sub>2</sub>O

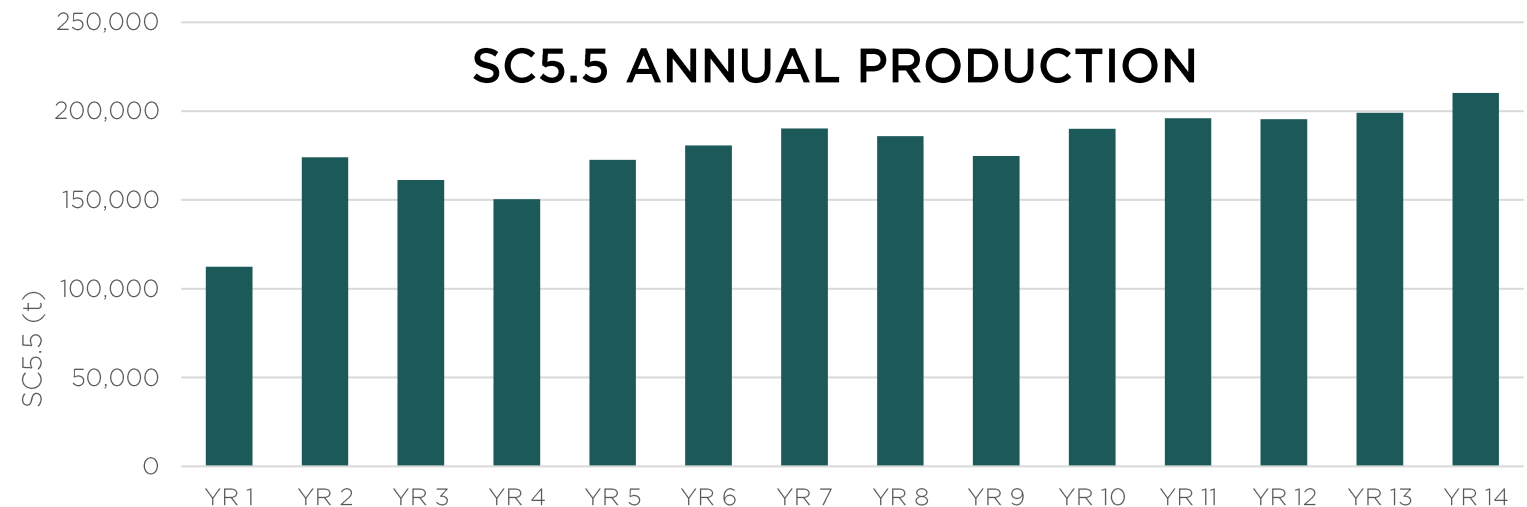
**178,000 tpa**

(24.2 ktpa LCE)

ROM TO PLANT FEED



SC5.5 ANNUAL PRODUCTION



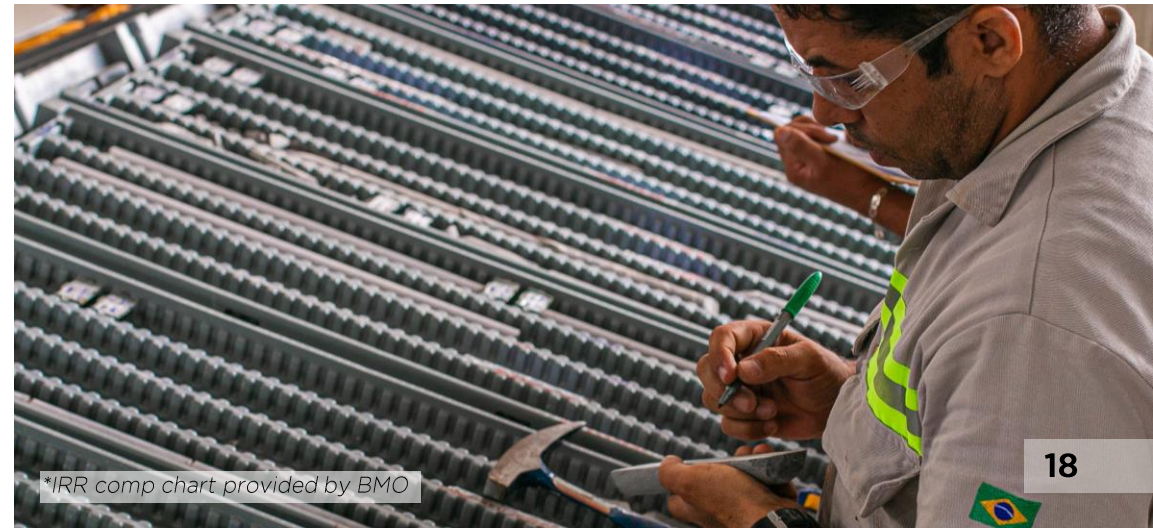
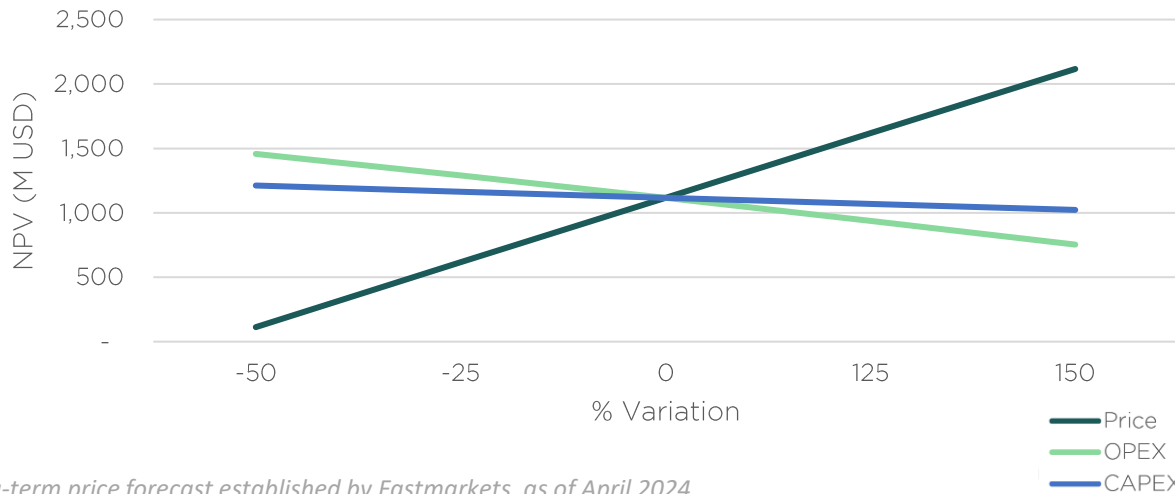
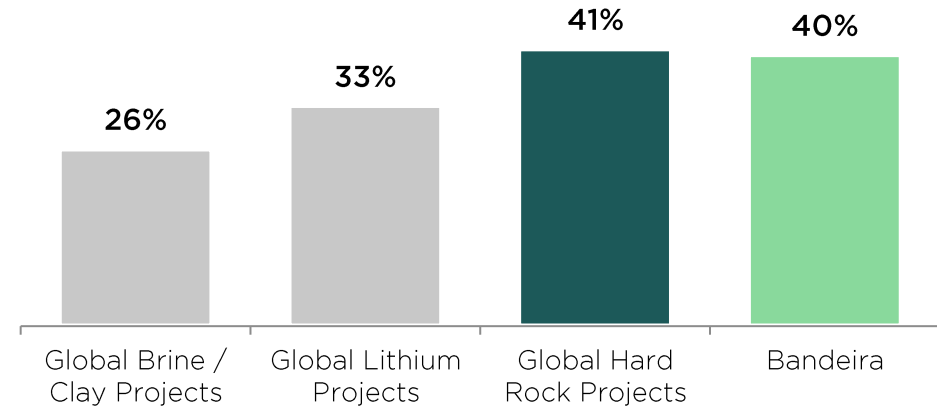
# PROJECT ECONOMICS & SENSITIVITY

With the anticipated rise in lithium demand, the project is well positioned to benefit from future market conditions.

	Low Case	Base Case	High Case
<i>*See Fastmarkets Spodumene price forecast chart on next side</i>			
<b>SC5.5 Price</b> (LOM Average)	\$1,822/t	<b>\$2,277/t</b>	\$3,416/t
<b>NPV</b>	\$864 M	<b>\$1.31B</b>	\$2.41B
<b>IRR</b>	32.5%	<b>40.3%</b>	62.2%
<b>Payback</b>	4.3 years	<b>3.4 years</b>	2.2 years

## IRR: GLOBAL BENCHMARKING

Based on 24 lithium project economic studies completed since 2022.



\*IRR comp chart provided by BMO

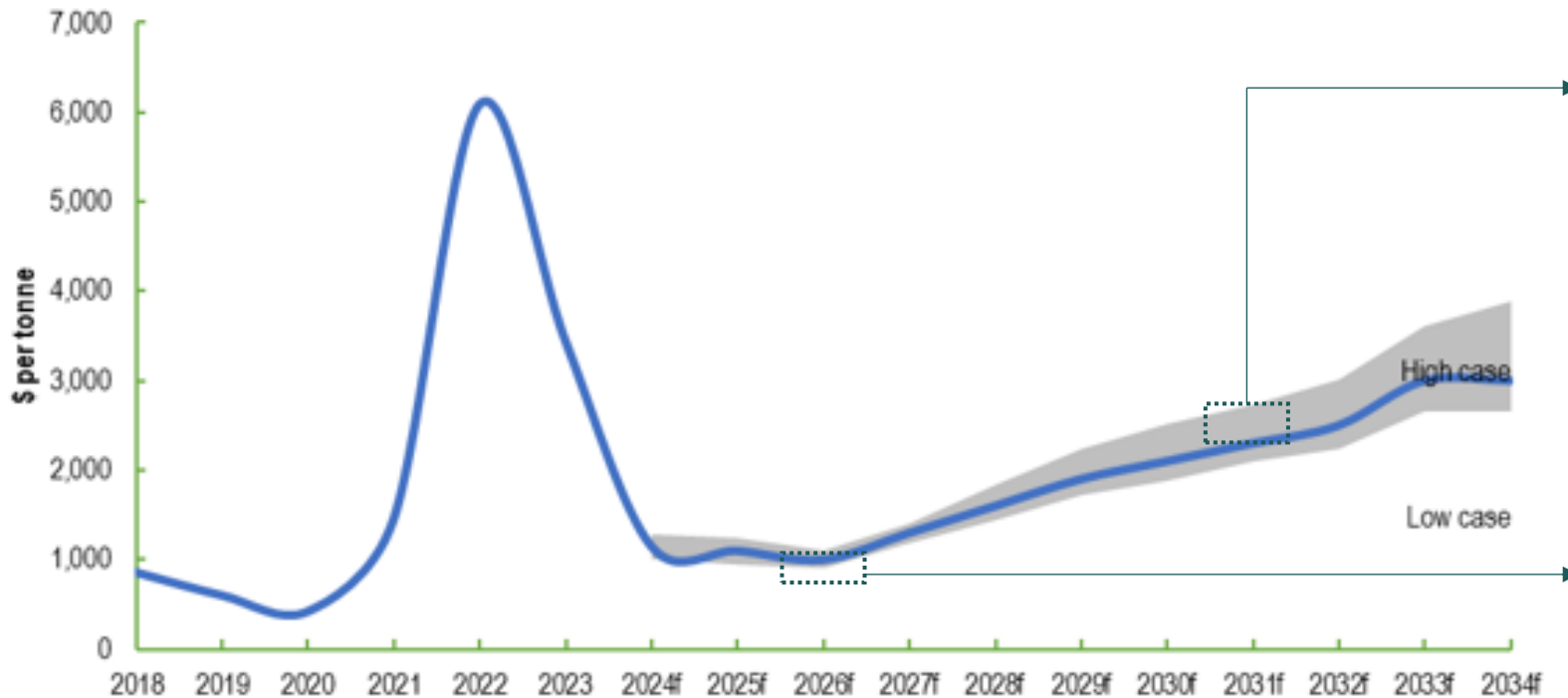
\* Long-term price forecast established by Fastmarkets, as of April 2024



# SPODUMENE PRICE FORECAST



Fastmarkets Spodumene Price Forecast (2024-2034)



The Feasibility Study used a conservative long-term spodumene price forecast of

**\$2,277/t SC5.5%**

based on Fastmarkets analysis

3.4-year payback on capital despite lower near-term spodumene pricing of

**\$917/t SC5.5%**

(2026)

# FEASIBILITY FINANCIAL RESULTS

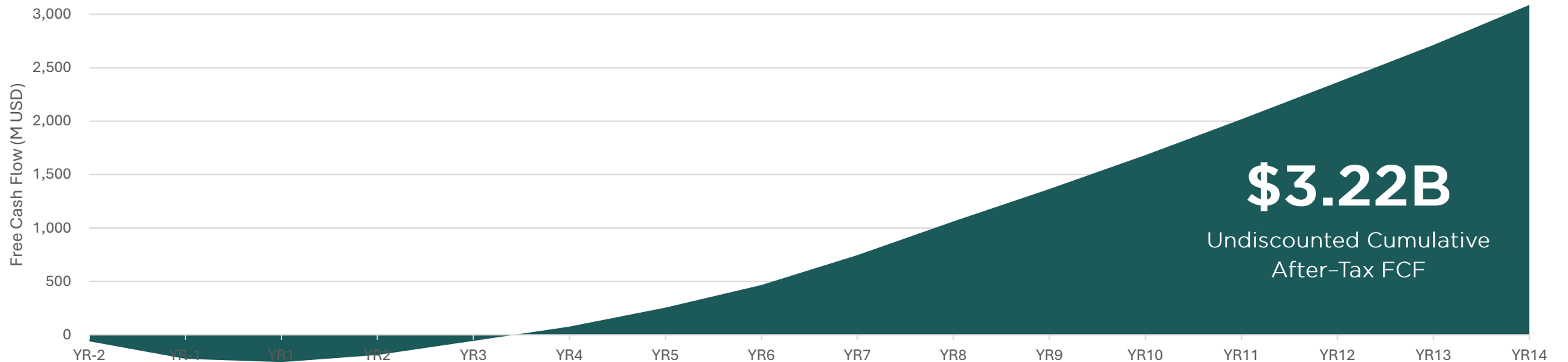
## Positioned to capture lithium market recovery

**\$286M**

**AVG ANNUAL FREE CASH FLOW**  
(After repayment of initial capital, years 4-14)

Opportunity to strengthen early project cash flow with conversion of near surface Inferred resources.

## Cumulative Annual Free Cash Flow





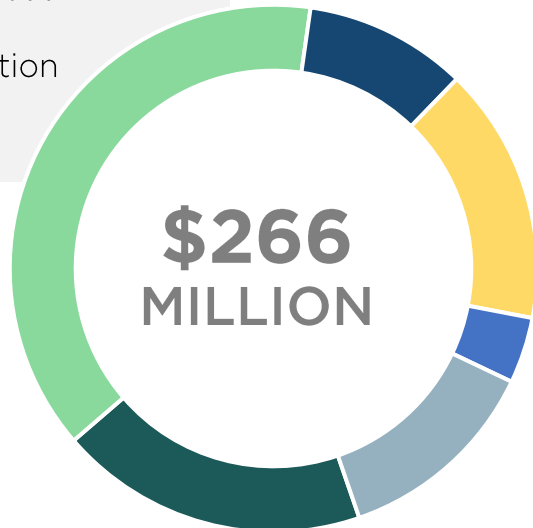
# CAPEX & OPEX

## Conservative approach to capital costs

- Costs benchmarked with other recent construction projects in the region
- Established regional contractors and infrastructure to support site construction
- Regionally based engineering and construction management

## CAPEX

Mine	\$50.5M
Plant	\$102.7M
EPCM Services	\$26.6M
Infrastructure & Other	\$41.9M
Pre-operation	\$10.8M
Contingency	\$33.7M
<b>Total</b>	<b>\$266.2M</b>



- Mine
- Plant
- EPCM Services
- General Infrastructure & Others
- Pre operacional
- Contingency

## Low operating cost supporting strong cash flow

- Costs validated by regional peer group
- Contract operations for mine development
- Owner-operated underground fleet for production mining
- Locally based workforce
- Simple process design minimizes high-cost unit operations

## OPEX

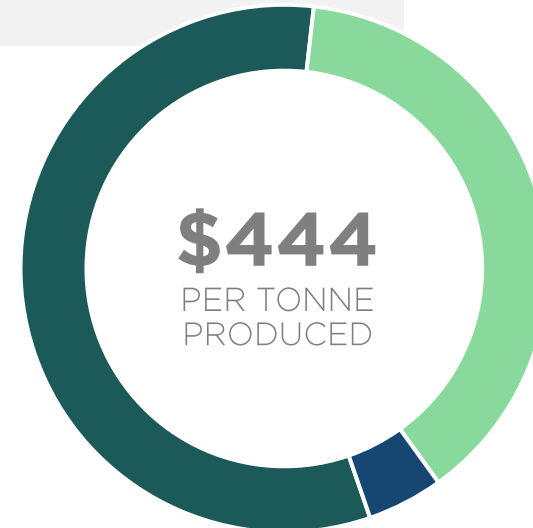
(per tonne of ore processed)

Mining	\$36.7/t
Processing	\$24.6/t
SG&A	\$3.0/t
<b>Total</b>	<b>\$64.4/t</b>

## OPEX

(per tonne of concentrate produced)

Mining	\$254/t
Processing	\$170/t
SG&A	\$21/t
<b>Total</b>	<b>\$444/t</b>
Transportation costs to customer	\$113/t



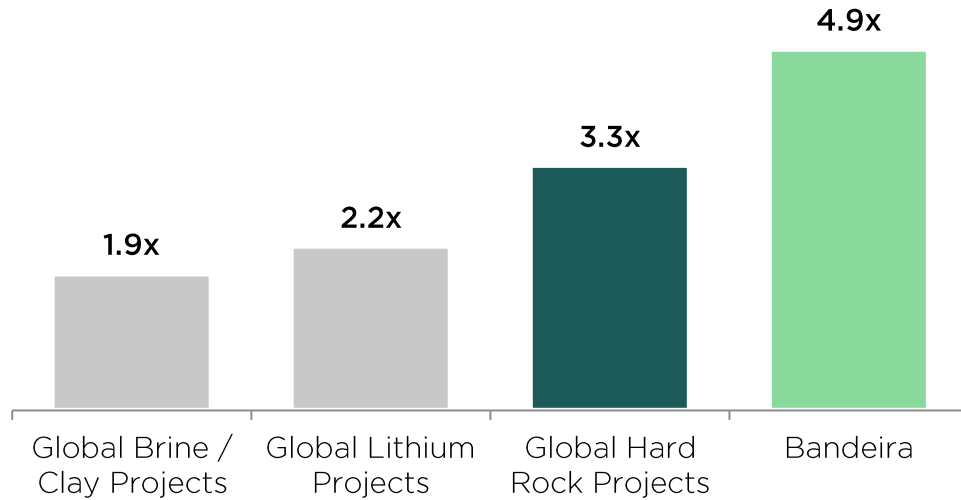
- Mine
- Plant
- SG&A

# GLOBAL BENCHMARKING

## RECENT LITHIUM PROJECT ECONOMIC STUDIES

### NPV/CAPEX

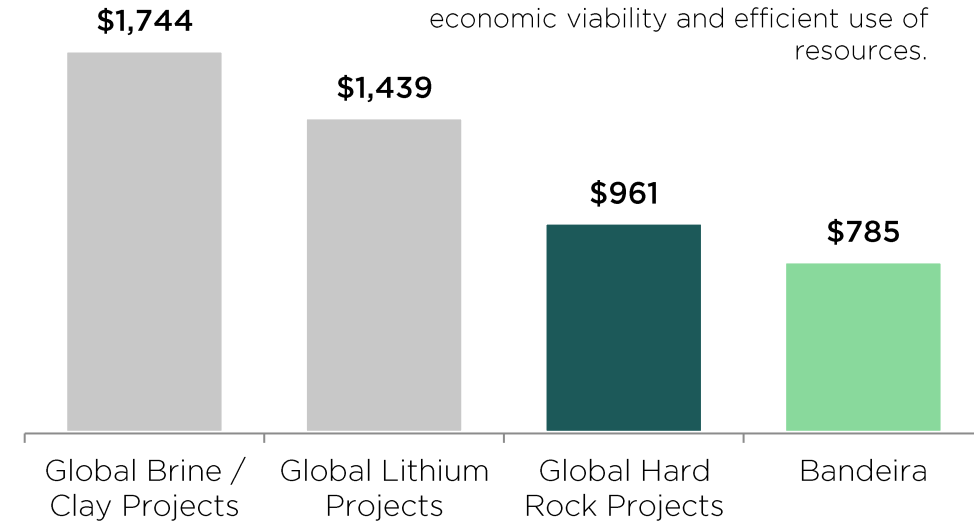
Bandeira outperforms global hard rock lithium projects, highlighting its efficient use of capital and higher returns on investment.



### CAPITAL INTENSITY

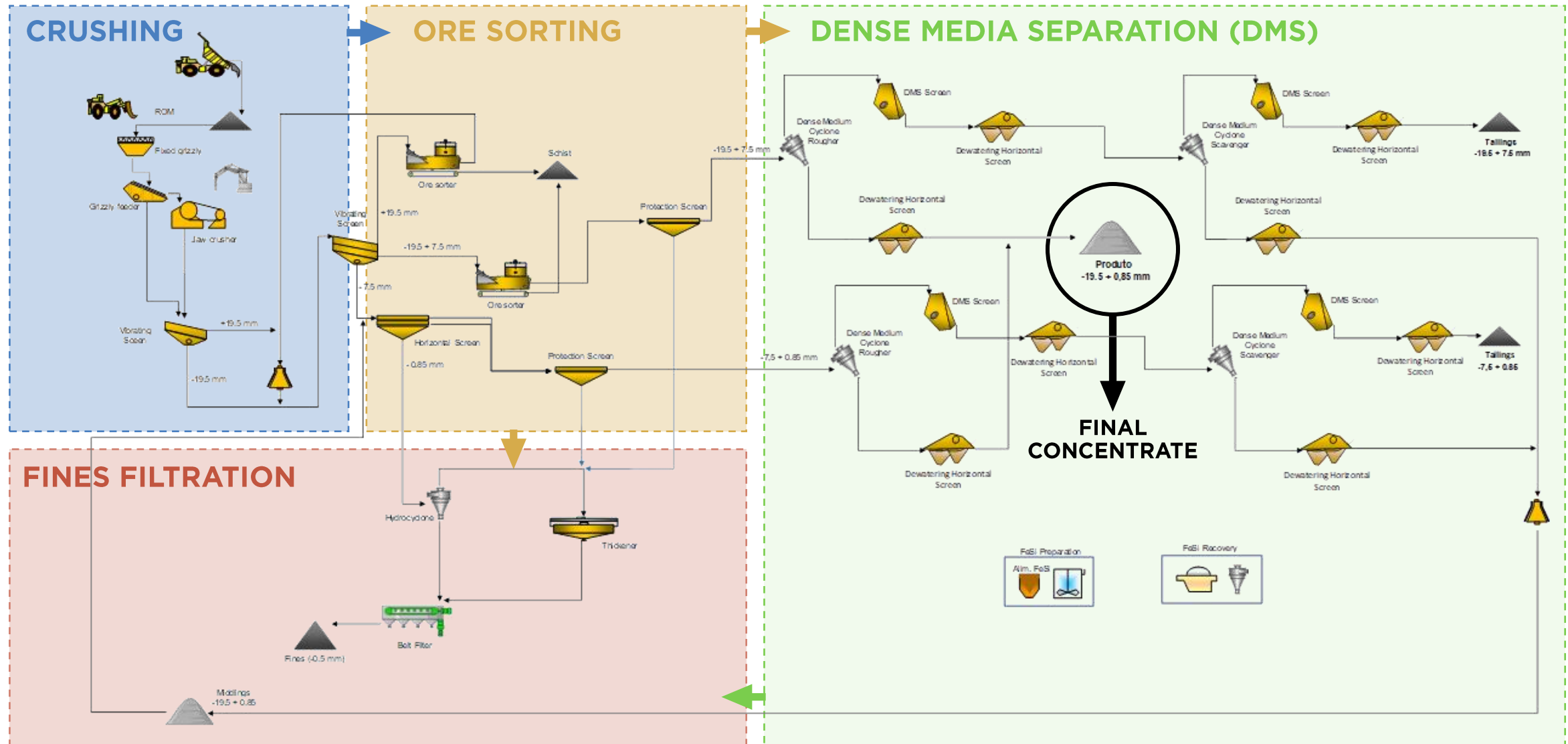
(US\$/t LCE)

Bandeira is more cost-effective compared to other global lithium projects, underscoring its economic viability and efficient use of resources.





# BANDEIRA FLOWSHEET



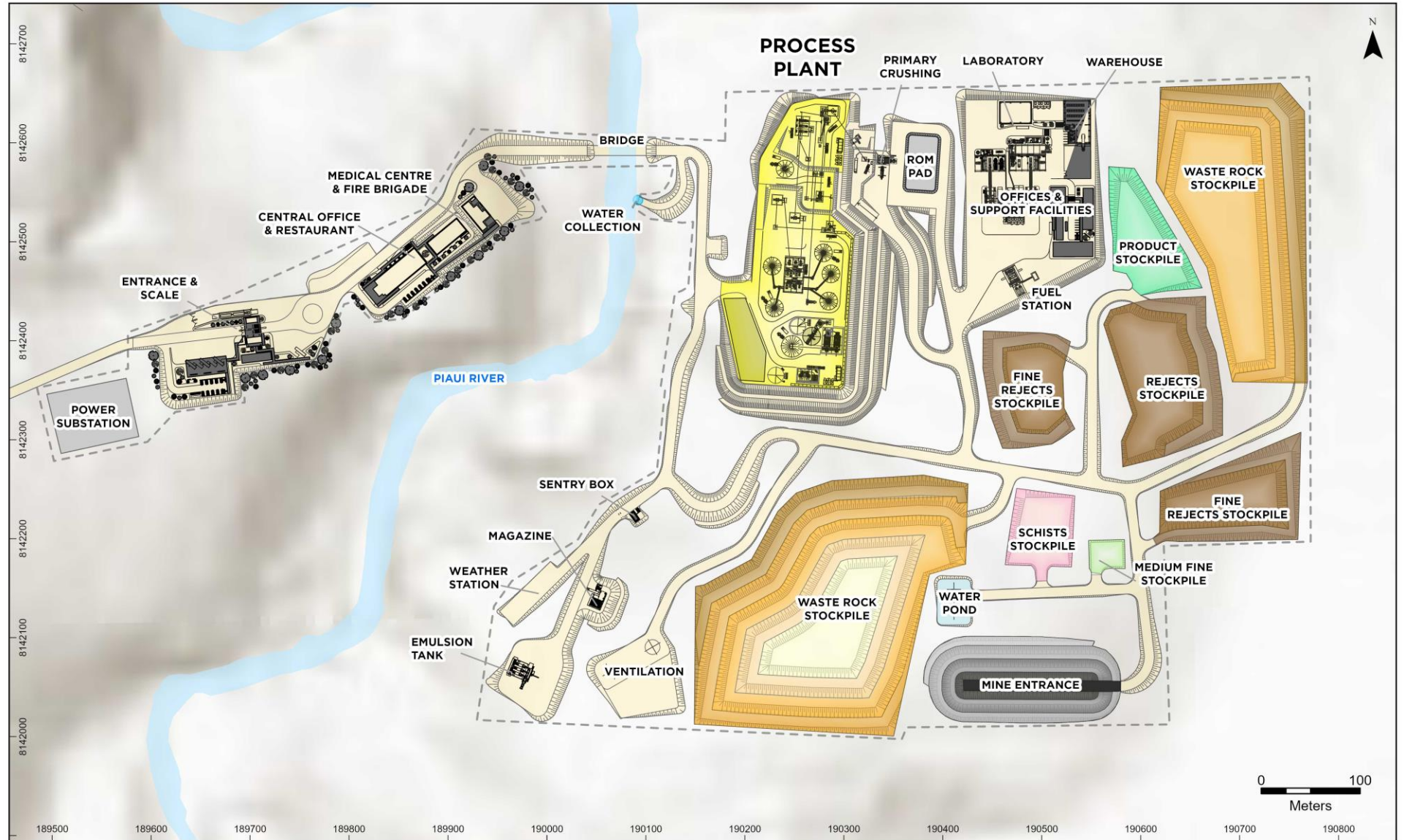
# SITE LAYOUT

- Sustainable underground mining and minimal land-use footprint
- Low-cost and low complexity DMS (Dense Media Separation) operation

## PERMITTING PROGRESS

### WATER RIGHTS GRANTED IN APRIL 2024

Lithium Ionic receives approval to draw water from the Piauí River for the Bandeira Project from the Minas Gerais Institute of Water Management ("Instituto Mineiro de Gestão das Águas" or "IGAM")

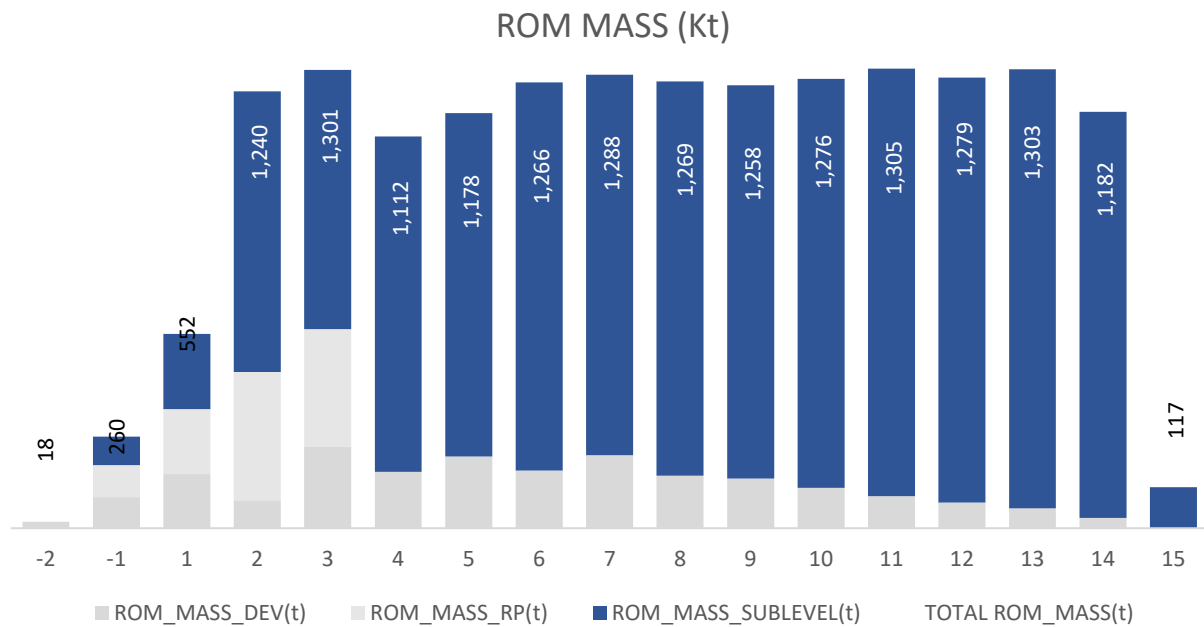




# MINING & PROCESSING

## Demonstrated mining methods supported by regional operating peers

- Demonstrated underground mining methods supported by 30 years of operating history at CBL operations
- Utilizes a room-and-pillar design for the southern portion of the orebody during start-up
- Transitions to sub-level stoping of the main orebody for the remaining life of mine



# PROCESSING

## Proven processing methods utilizing DMS to generate spodumene concentrate

- Ore sorting technology prevents unnecessary processing of barren material recovering 94% of  $\text{Li}_2\text{O}$  while rejecting 20% of mass
- Simple coarse dense medium separation (DMS) method for producing concentrate. A demonstrated process by CBL and Sigma.
- Coarse processing negates the need for a slurry tailings impoundment.
- Supported by recent pilot plant work by Steinert and SGS Geosol.
- 68.9% overall plant recovery, supported by external qualified professional reviewers.

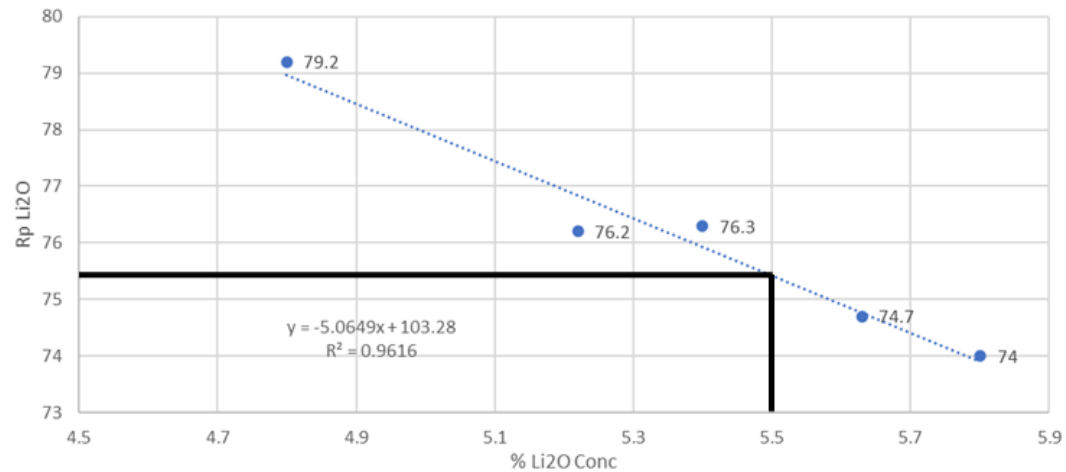


Ore Sorter Pilot Plant



DMS Pilot Plant

### Rougher DMS Recovery -9,5 + 0,5 mm





# BANDEIRA FEASIBILITY STUDY: KEY HIGHLIGHTS

## Low CAPEX

Lean installation with estimates supported by recent adjacent projects



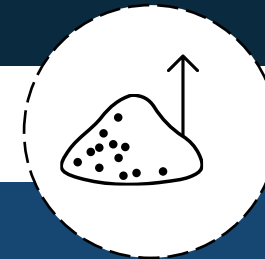
## Low Disturbance UG Mine

Minimized impact on environment & local communities



## Established Infrastructure

Road access, hydroelectric power, local workforce & bulk loadout ports to global markets



## Low OPEX

In-line with regional producers & resilient to challenging market conditions

## Simple Process

Coarse mineralization supports simple and lean DMS processing method producing high-quality and sustainable SC

## 2026 Production

Near-term value creation with on-track permitting and clear path to production

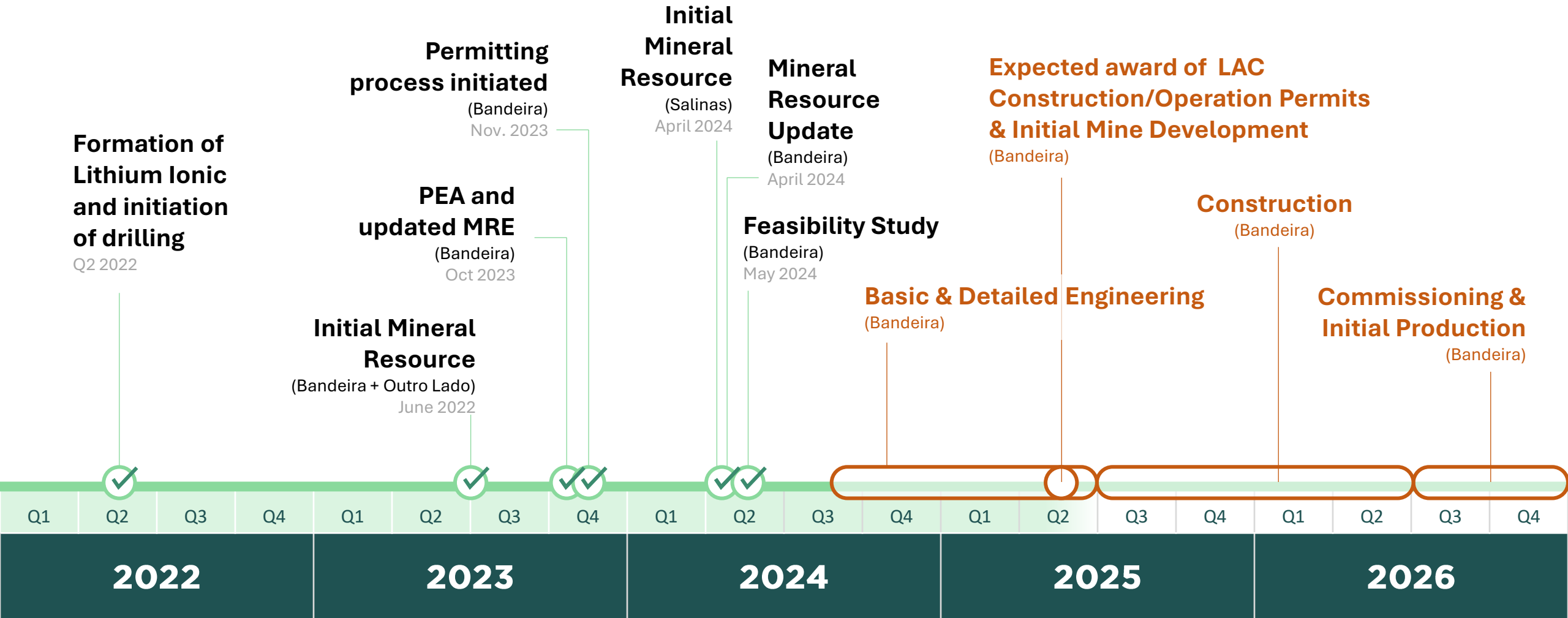
# LTH PROJECTS GRANTED PRIORITY STATUS

- **July 2023: MOU signed with Invest Minas** (State Economic Department of Minas Gerais and the Minas Gerais Integrated Development Institute), mutually supporting the development of the battery materials sector in the region.
- Lithium Ionic's **Itinga and Salinas lithium projects are granted priority status** by the state of Minas Gerais regional government bodies, facilitating support and acceleration of approvals and licensing through the development process.
- **Invest Minas to support and prioritize Lithium Ionic** from the exploration to operational stages, including environmental licensing and regulatory approvals.
- **LAC Permit Approval expected in late Q1 2025.**





# RECENT MILESTONES & PATH TO PRODUCTION



# PRIORITIZING SUSTAINABILITY & ESG

## Sustainable Mine Design: *Bandeira*



### Underground Mine

Smaller environmental footprint, Moves ~16 times less rock, Reduces dust production.



### Dense Media Separation (DMS) Tailings

This technology minimizes water use, energy consumption, chemical use, and overall tailings volume, ensuring a safer disposal process.



### Sustainable Water Access

“Water Rights” Permits were obtained for Ribeiro Piau, with a goal of 90% water recirculation once in production.



### Secured Hydroelectric Grid Access

In Q4 2023, we partnered with Cemig Distribuição S.A., Brazil’s largest hydroelectric provider, to connect to the main power infrastructure for our future *Bandeira* operation.



## Corporate Policies in Place

- ✓ Audit Committee Charter
- ✓ Anti-Bribery Policy
- ✓ Code of Business Conduct and Ethics
- ✓ ESG Policy
- ✓ Diversity and Inclusion Policy
- ✓ Human Rights Policy

## ESG Reporting



Lithium Ionic utilizes Onyen’s ESG software to streamline sustainability reporting, and enable accurate tracking and compliance with international standards such as SASB and GRI.



Lithium Ionic has initiated the IRMA self-assessment for the *Bandeira* Project to benchmark operations against the IRMA Ready Standard to ensure our project is aligned with industry best practices.



United Nations  
Global Compact

Lithium Ionic proudly joins the UN Global Compact, reinforcing our commitment to responsible business practices, environmental stewardship, and sustainable growth.



# CAPITAL STRUCTURE

## TSX.V: LTH

Common Shares Outstanding	158,579,158
Options	15,127,000
Warrants	11,775,853
Market Capitalization	~C\$112M
52-week High/Low	C\$1.17/C\$0.41
Share Price (05/06/25)	C\$0.71
Cash (Q3 ending Sept. 30, 2024)	~C\$28 million

## ANALYST COVERAGE:



Varun Arora



*tbd*



Cole McGill



Katie Lachapelle

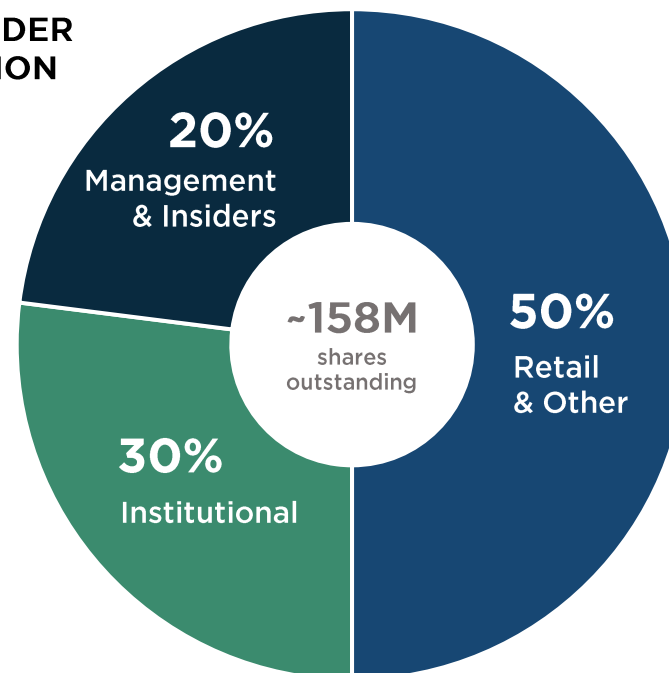


Frederic Tremblay



Shannon Gill

## SHAREHOLDER DISTRIBUTION



## TOP INSTITUTIONAL SHAREHOLDERS



# EXECUTIVE LEADERSHIP TEAM



**Blake Hylands**  
CEO, Director

Professional Geoscientist with 13 years of international experience in advanced and early-stage exploration (gold, base metals, iron ore). Co-founder of Troilus Gold where he led the technical team to the discovery of +8Moz AuEq gold in Quebec. Extensive capital markets, corporate development and community relations experience.



**Helio Diniz**  
President, Director

+40 years of experience in the mining sector. Former Managing Director Brazil for Xstrata (Glencore) where he discovered the Araguaia Nickel Deposit (+100Mt, 1.5% Ni). Began his career with GENCOR South Africa: Sao Bento gold mine, Brazil (AngloGold Ashanti). Founder of Falcon Metais and HDX Consultoria to identify/explore and develop mining opportunities in Brazil. Founded and developed several companies for the F&M Group, incl: Brazil Potash (current Managing Director), Aguia Metais (potash), Belo Sun (gold) and Irati (oil shale).



**Mike Westendorf**  
COO

Professional engineer with 20 years of diversified experience in mining operations, capital projects, engineering, and corporate development. Most recently acted as Director of Operational Excellence for Copper Mountain Mining Corp. (now Hudbay Minerals), where he led initiatives to improve production, execute capital upgrades, and reduce costs at the Copper Mountain Mine, Canada. Here, he also acted as Production Manager, overseeing the development of their Eva Copper Project in Australia, and Director of Metallurgy, supporting resource expansions and development.



**Tom Olesinski**  
CFO

+25 years of finance and executive management experience. Former forensic accountant for BDO Dunwoody. Former Director of Finance and Operations for Cossette Communication Group, CEO and CFO at Havas Media Canada, and COO and CFO for Brainrider. Current board member of Troilus Gold Corp.



**Carlos Costa**  
VP Exploration

~40 years of experience; 29 yrs in base metals, gold and PGE exploration throughout Brazil. Managed several exploration programs, from regional grassroots to bankable feasibility studies. 10 yrs experience in mine geology, including underground and open pit operations. Former Country Manager Brazil for Emerita; Led exploration programs for Belo Sun, Xstrata, Falconbridge; with experience at Vale and BP Mineração (British Petroleum Group).



**André Guimarães**  
VP Corp. Development

PhD Geology graduate specializing in igneous petrology with +10 years of experience in research. Founder of Neolit Minerals (2020), where he has been directly involved in all corporate and exploration activities, including analyses and interpretation of geological data, particularly geochemical results, field work and contract negotiations. Former archaeologist who was involved in rescue archaeology projects associated with the development of mining sites in Brazil.



**Damian Lopez**  
Corporate Secretary

Corporate securities lawyer with +15 years experience working as a legal consultant to various TSX and TSXV listed companies. Previously worked as a securities and merger & acquisitions lawyer at a large Toronto corporate legal firm, where he worked on a variety of corporate and commercial transactions.

## DIRECTORS

Broad experience in mining and other industries

Blake Hylands  
Patrizia Ferrarese

Helio Diniz  
Michael Shuh

David Gower  
David D'Onofrio

Lawrence Guy  
Ian Pritchard





THANK YOU



TSX.V: **LTH** | OTCQX: **LTHCF** | FSE: **H3N**

Lithium Ionic Corp. 400-36 Lombard St., Toronto, Ontario, Canada, M5C 2X3

**CONTACT**

Investor Relations  
+1 647.316.2500  
[info@lithiumionic.com](mailto:info@lithiumionic.com)

**FOLLOW US**



@LithiumIonic